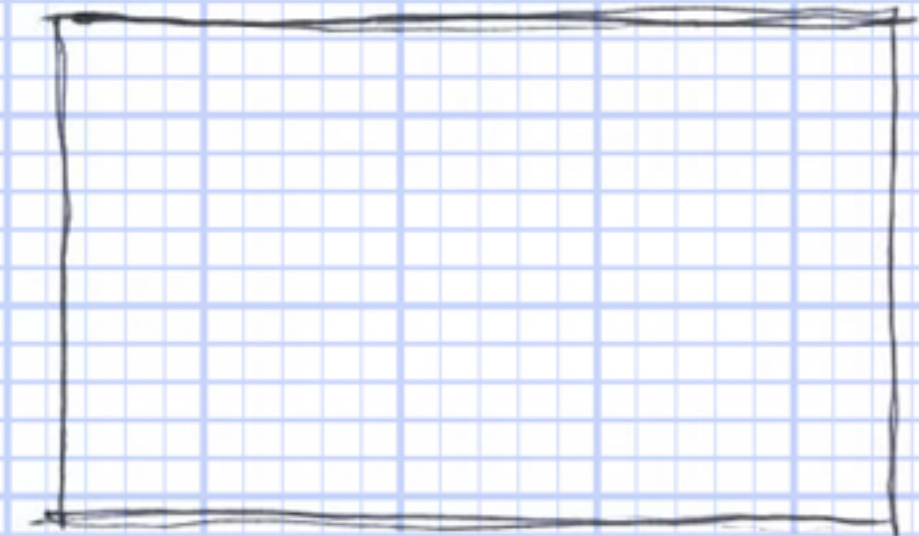


No need for perfection, wall dimensions, or for your sketches to be “to scale.”

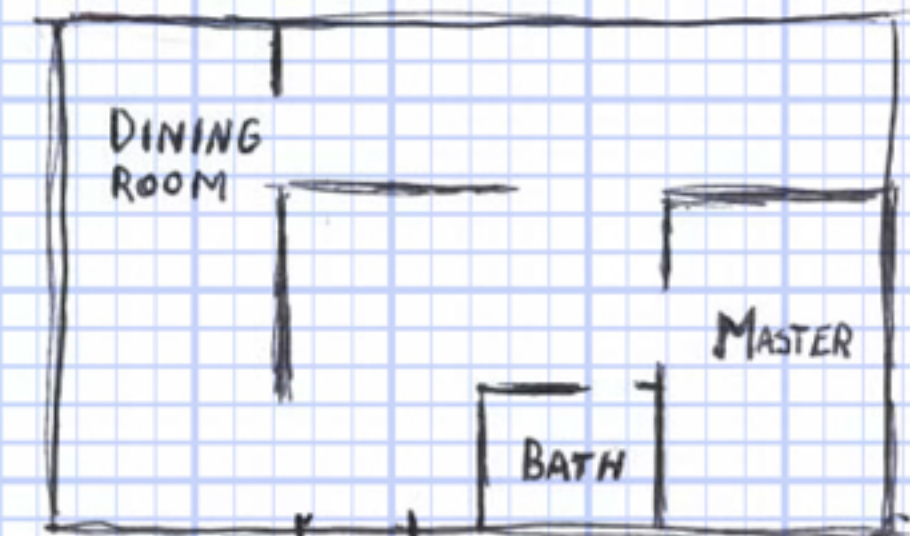
- Use a perspective from directly overhead to sketch your floor plans. If you have multiple floors, sketch one floor at a time.

- Work from the outside in. Start with the exterior rooms before filling in the rest. Leave an opening to show door or entry ways.

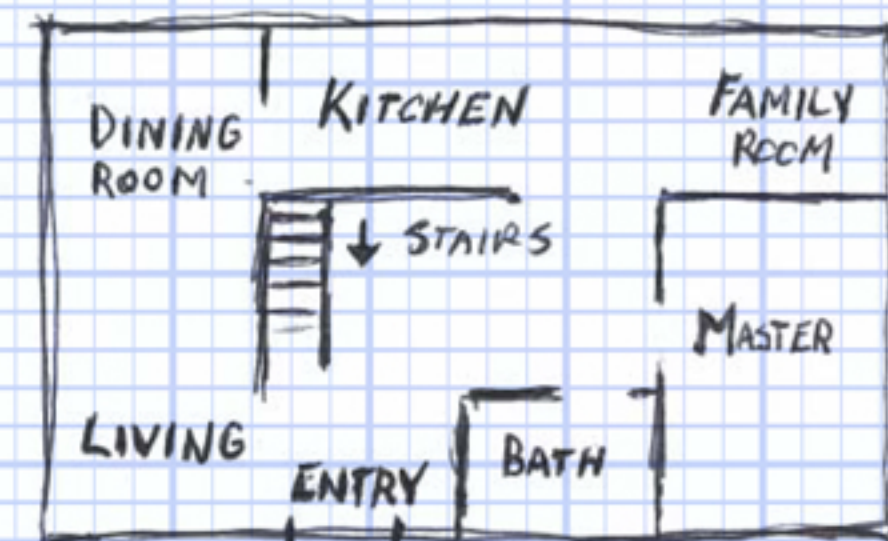
- Label entry, stairs, windows and any other interesting features.



*1st FLOOR UPSTAIRS*



*1st FLOOR UPSTAIRS*



*1st FLOOR UPSTAIRS*